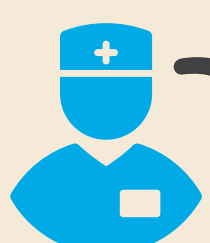


# GetSavvi HEALTH+

GetSavvi Health offers a range of medical insurance plans to choose from. We take a look at the **Primary Care Plan +** and **Primary Care Plan + Top-up** and all the features and benefits on offer.

Medical Insurance you can afford



**R877** per family per month  
**R556** per single member per month

## PRIMARY CARE PLAN +



**COVERS:**  
You, your spouse and children (family)



**CARD:**  
Electronic health insurance card/s



**FEES:**  
No upfront joining fees

### PLAN BENEFITS 2020



#### Day-to-day Benefits



Unlimited GP visits (+ radiology & pathology)



Basic & emergency dentistry



Acute & chronic medication



Access to designated pharmacies



Minor in-room GP procedures



#### Netcare 911 Emergency Services



24/7 telephonic medical advice (ask a doctor, ask a nurse)



24/7 emergency medical response (air or road)



Inter-hospital transfers



Repatriation of mortal remains



#### Unlimited HIV, Trauma and Assault Counselling



24/7 Care Centre



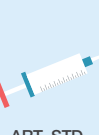
Telephonic/face-to-face counselling



Alternative therapies (R1 500)



Disease & stress management guidance



ART, STD, assault medication



#### 24-hour Health Advisor



Health knowledge on medication, drugs & poisoning, etc.



24/7/365 telephonic advice



Chronic, disease, stress & trauma counselling



Emergency & first-aid advice



#### Discount Coupons

##### Grocery and Pharmacy Coupons

1 SAVE UP TO **R500**

2 Redeemable at:

**SHOPRITE**

**Checkers Hyper**  
**Dis-Chem PHARMACIES**  
**Checkers**



#### Maternity Benefits

**R20 000**

Cover for normal birth

OR

**R30 000**

Cover for C-Section

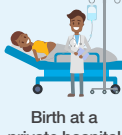
Above cover Includes:



Gynaecologist's visits



Ultrasound scans



Birth at a private hospital



#### Emergency Hospital Cover

**R126 000**

Personal Accident Benefit: Inpatient hospital treatment in the event of an accident

**R19 500**

Emergency Stabilisation Benefit: Outpatient hospital treatment in an emergency until stabilised

**R6 680**

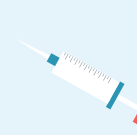
Emergency Casualty Benefit: Outpatient hospital treatment in an emergency



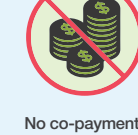
#### FeelBetterFast



Pharmacy consultation plus medication



Includes annual flu vaccination



No co-payments



For minor ailments

**Pick n Pay** Pharmacy and Network pharmacies

**feel better fast**



#### Comprehensive Family Funeral Plan

**R13 500**

Principal Member (18-60)

**R13 500**

Spouse

**R13 500**

Children (aged 14-21)

**R6 750**

Children (aged 6-13)

**R3 375**

Children (stillbirth up to 5 years)



**R1 027** per family per month  
**R706** per single member per month

## PRIMARY CARE PLAN + TOP-UP

Primary Care Plan + Top-up includes all Primary Care Plan + benefits plus Optometry and Dentistry Top-up



#### Optometry and Dentistry Top-up



One consultation (including eye test), one PPN frame and one pair of single vision/bifocal lenses



Consultations, radiographs, preventative care, restorations, extractions, emergency treatment and surgical incisions

### OTHER PLANS



Get Care Plan

**R322**

family/  
single member



Primary Care Plan

**R667**

family

**R422**

single member



Primary Care Plan Top-up

**R817**

family

**R572**

single member



Primary Care Plan 61+

**R1 730**

family

**R885**

single member



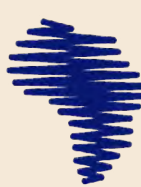
0861 18 92 02



talktous@getsavvi.co.za



www.getsavvi.co.za



AFRICAN UNITY LIFE

GetSavvi Health is an authorised Financial Services Provider FSP No. 44283, underwritten by African Unity Life Limited, a registered long-term insurer, FSP No. 8447. GetSavvi Health is a medical insurance plan, not a medical aid scheme, and adheres to the long- and short-term insurance acts. Ts & Cs apply.