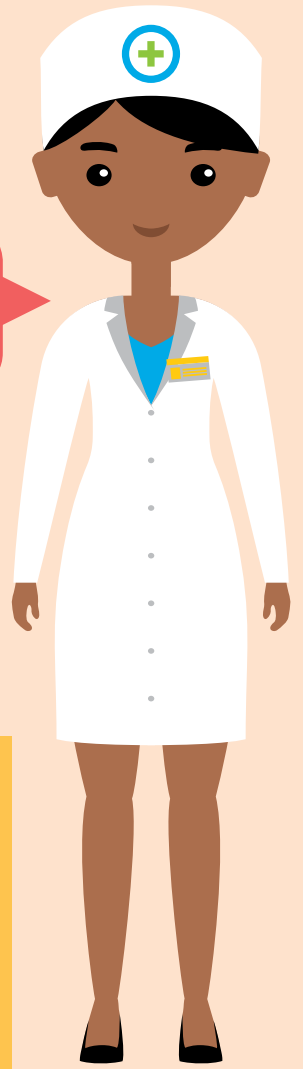


# GetSavvi HEALTH+

GetSavvi Health offers a range of medical insurance plans to choose from. We take a look at the **Get Care Plan** and all the features and benefits on offer.

Medical Insurance you can afford



**R322**  
per family/single member per month

# GET CARE PLAN

**COVERS:**  
You, your spouse and children (family)

**CARD:**  
Electronic health insurance card/s

**FEES:**  
No upfront joining fees

## PLAN BENEFITS 2020

### Emergency Hospital Cover

- R126 000** Personal Accident Benefit: Inpatient hospital treatment in the event of an accident
- R19 500** Emergency Stabilisation Benefit: Outpatient hospital treatment in an emergency until stabilised
- R6 680** Emergency Casualty Benefit: Outpatient hospital treatment in an emergency

### Netcare 911 Emergency Services

- 24/7 telephonic medical advice (ask a doctor, ask a nurse)
- 24/7 emergency medical response (air or road)
- Inter-hospital transfers
- Repatriation of mortal remains

### Maternity Benefits

- R20 000** Cover for normal birth
- R30 000** Cover for C-Section

Above cover Includes:

- Gynaecologist's visits
- Ultrasound scans
- Birth at a private hospital

### Unlimited HIV, Trauma and Assault Counselling

- 24/7 Care Centre
- Telephonic/face-to-face counselling
- Alternative therapies (R1 500)
- Disease & stress management guidance
- ART, STD, assault medication

### 24-hour Health Advisor

- Health knowledge on medication, drugs & poisoning, etc.
- 24/7/365 telephonic advice
- Chronic, disease, stress & trauma counselling
- Emergency & first-aid advice

### Discount Coupons

**Grocery and Pharmacy Coupons**

- 1 SAVE UP TO **R500**
- 2 Redeemable at: **SHOPRITE**, **Checkers Hyper**, **Dis-Chem PHARMACIES**, **Checkers**

### FeelBetterFast

- Pharmacy consultation plus medication
- Includes annual flu vaccination
- No co-payments
- For minor ailments

**Pick n Pay Pharmacy** and Network pharmacies

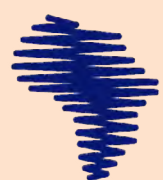
### Comprehensive Family Funeral Plan

- R13 500** Principal Member (18-60)
- R13 500** Spouse
- R13 500** Children (aged 14-21)
- R6 750** Children (aged 6-13)
- R3 375** Children (stillbirth up to 5 years)

## OTHER PLANS

	Primary Care Plan	R667	family
		R422	single member
	Primary Care Plan Top-up	R817	family
		R572	single member
	Primary Care Plan +	R877	family
		R556	single member
	Primary Care Plan + Top-up	R1 027	family
		R706	single member
	Primary Care Plan 61+	R1 730	family
		R885	single member

0861 18 92 02 | talktous@getsavvi.co.za | www.getsavvi.co.za



AFRICAN UNITY LIFE

GetSavvi Health is an authorised Financial Services Provider FSP No. 44283, underwritten by African Unity Life Limited, a registered long-term insurer, FSP No. 8447. GetSavvi Health is a medical insurance plan, not a medical aid scheme, and adheres to the long- and short-term insurance acts. Ts & Cs apply.