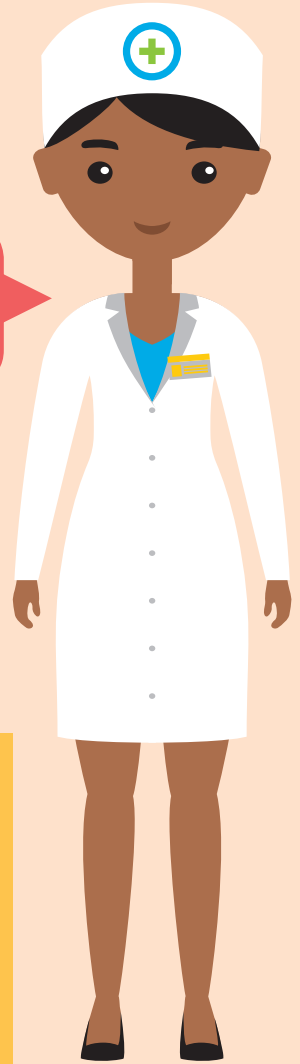


GetSavvi HEALTH+

GetSavvi Health offers a range of medical insurance plans to choose from. We take a look at the **Get Care Plan** and all the features and benefits on offer.

Medical Insurance you can afford



R353
per family/single member per month

GET CARE PLAN

COVERS:
You, your spouse and children (family)

CARD:
Electronic health insurance card/s

FEES:
No upfront joining fees

PLAN BENEFITS 2021

Emergency Hospital Cover

- R150 000** Personal Accident Benefit: Inpatient hospital treatment in the event of an accident
- R19 500** Emergency Stabilisation Benefit: Outpatient hospital treatment in an emergency until stabilised
- R6 680** Emergency Casualty Benefit: Outpatient hospital treatment in an emergency

Netcare 911 Emergency Services

- 24/7 telephonic medical advice (ask a doctor, ask a nurse)
- 24/7 emergency ambulance services (air or road)
- Inter-hospital transfers
- Repatriation of mortal remains

Maternity Benefits

R20 000 OF **R30 000**

Cover for normal birth Cover for C-Section

Above cover includes:

- Gynaecologists' visits
- Ultrasound scans
- Birth at a private hospital

Unlimited HIV, Trauma and Assault Counselling

- 24/7 Care Centre
- Telephonic/face-to-face counselling
- Disease & stress management guidance
- HIV tests + ART, STI & assault medication

Discount Coupons

- Grocery & Pharmacy Coupons
- Maximum Savings **R1 250**
- Each coupon redeemable up to 5 times
- Retrieved coupons valid until end of month
- Redeemable at these stores: SHOPRITE Checkers, Checkers Hyper, Dis-Chem PHARMACIES

24-hour Health Advisor

- 24/7/365 telephonic advice
- Emergency & first-aid advice
- Chronic, disease, stress & trauma counselling
- Health knowledge on medication, drugs & poisoning, etc.

FeelBetterFast

- Voucher via your cell phone
- Network pharmacy visits
- Selected acute medication
- No co-payments
- For minor ailments
- Vaccinations: flu & tetanus
- Health tests: blood pressure, body mass index (BMI), HIV status, glucose levels, smoking status & cholesterol + health report

Comprehensive Family Funeral Plan

- Principal Member (18-60): **R13 500** / **R27 500**
- Spouse: **R13 500** / **R27 500**
- Children (aged 14-21): **R13 500**
- Children (aged 6-13): **R6 750**
- Children (stillbirth up to 5 years): **R3 375**

OTHER PLANS

Primary Care Plan	R731	family
	R463	single member
Primary Care Plan Top-up	R894	family
	R627	single member
Primary Care Plan +	R961	family
	R609	single member
Primary Care Plan + Top-up	R1 125	family
	R772	single member
Primary Care Plan 61+	R1 895	family
	R970	single member

0861 18 92 02 talktous@getsavvi.co.za www.getsavvi.co.za



GetSavvi Health is an authorised Financial Services Provider, FSP No. 44283, underwritten by African Unity Life Ltd, a licensed life insurer and authorised Services Provider, FSP No. 8447. GetSavvi Health is a medical insurance plan, not a medical aid scheme, and adheres to the long- and short-term insurance acts. Ts & Cs apply.